

# INSECT PROTECTION

Prevent pesky insects, like mosquitoes, flies, and bees from invading your space (and your favorite beverage) with a durable, vinyl-coated polyester screen.

### PHIFER TUFFSCREEN® HEAVY-DUTY SCREEN

A highly durable screen that won't sag over time and is tear- and puncture-resistant—Ideal for high-traffic areas, withstanding the impact of tree debris and pet clawing.

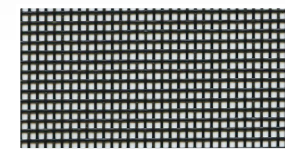
### PHIFER TUFFSCREEN® NO-SEE-UM SCREEN

A tightly woven screen designed to let the fresh breeze in while keeping the tiny no-see-um insects out.

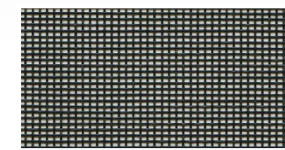
#### INSECT SCREEN FEATURES:

- ✓ Flame retardant
- ✓ GREENGUARD® Gold Certified, meeting high standards for low chemical emissions and indoor air quality.
- ✓ Covered by a 10-year warranty
- ✓ Protected with Microban® to inhibit the growth of stain-causing bacteria, mold and mildew on the screen.
- ✓ Proudly made in the USA

TUFFSCREEN®



TUFFSCREEN® NO-SEE-UM



Patios, Porches & Balcony Screens



Window, Door & Solar Protection

#### MOTORS

Choose motors from Dooya® or Somfy® Maestria with obstacle detection.

#### REMOTES & CONTROLS

Multiple remote control options available, including home automation control through the Somfy myLink™ phone app.



Single Channel



Multi Channel



Automation

www.SunProScreens.com

## MOTORIZED SCREENS



*"Such a great addition to the home—I wish I had done it sooner!"* - Tiffany

RESIDENTIAL AND COMMERCIAL



SunPro was ranked as one of AMERICA'S FASTEST-GROWING PRIVATE COMPANIES

www.SunProScreens.com



## MOTORIZED SCREENS



### Weather Protection

Block heat and harmful UV rays

### Insect Protection

Breezes blow through while bugs and insects stay out

### Privacy

Relax in comfort without the worry of who's watching

## INCREASE YOUR COMFORT AND STYLE— INDOOR AND OUT

Enhance your indoor and outdoor experience with a motorized retractable screen. Control your screens effortlessly with a hand-held remote or automation system.



Fastest turnaround time in the industry



Custom manufactured to ordered specifications



Solar, insect and vinyl screens available



Built to last



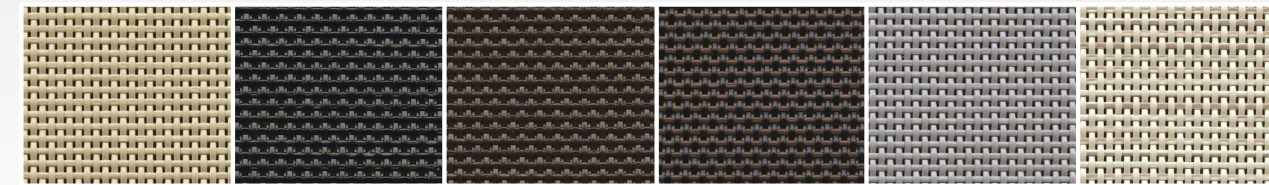
Available in spans up to 30'

## WEATHER PROTECTION

Create an attractive defense to the elements, without hindering your view.

- ✓ **CLIMATE CONTROL** - Moderate whatever Mother Nature throws, for a more comfortable indoor space.
- ✓ **BLOCK UV RAYS** - Reduce the risk of harmful UV rays that can fade furniture.
- ✓ **REDUCE ENERGY BILLS AND GLARE** - Enjoy more efficient air conditioning with innovative fabrics that block 80-90% of the sun's heat and glare.

PHIFER SUNTEX® 80/90 SOLAR SCREENS



## PRIVACY

Increase privacy when you need it. Maintain superior ventilation, outward visibility and the ability to retract the screens with the touch of a button.

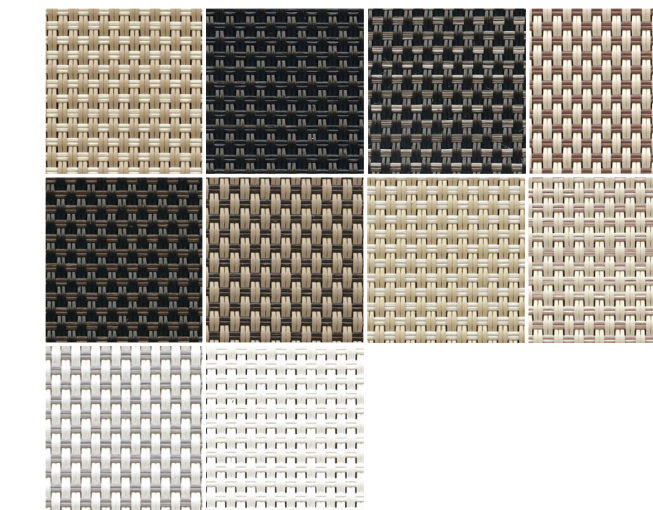
### PHIFER SUNTEX® 95

A full basketweave vinyl-coated polyester fabric that can block 80-90% of the sun's hot rays, as well as provide daytime privacy without losing outward visibility.

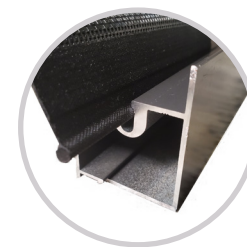
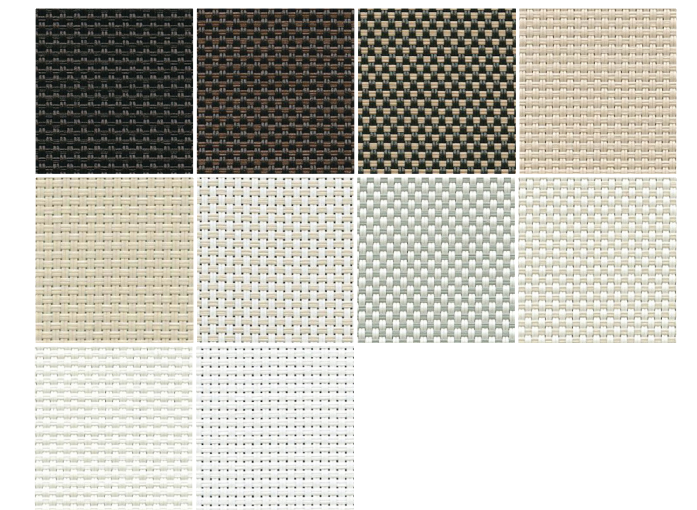
### PRIVACY SCREEN FEATURES:

- ✓ Flame retardant
- ✓ GREENGUARD® Gold Certified, meeting high standards for low chemical emissions and indoor air quality.
- ✓ Seal of approval by the Melanoma International Foundation (MIF) for effectiveness in preventing sun damage to the skin or eyes.
- ✓ Covered by a 10-year warranty
- ✓ Protected with Microban® to inhibit the growth of stain-causing bacteria, mold and mildew on the screen.
- ✓ Proudly made in the USA

PHIFER SUNTEX® 95 PRIVACY SCREENS



PHIFER SHEERWEAVE® SUN CONTROL SCREENS



**KEDER TECHNOLOGY**  
Our keder (sidetrack system) has been independently tested with winds over 100 miles per hour and has never pulled from the track.



**OBSTACLE DETECTION**  
The Maestria™ by Somfy® motor provides obstacle detection and automatic adjustment to protect carrier products, prevent fabric damage and ensure perfect tension.

### THREE INSTALLATION METHODS



**Standard**  
For inside and outside mount applications.



**Recessed**  
Hide the tracks and housing from view (pre-construction).



**Commercial**  
For commercial applications or where high wind loads occur.



**WORRY-FREE PROTECTION— JUST IN CASE YOU NEED IT**

- ✓ Lifetime warranty on hardware
- ✓ 10-year warranty on screen fabric/mesh
- ✓ 5-year warranty on the motor and controls\*

\*See warranty for details

**HOUSING COLORS**  
Choose from five standard colors or create your own custom color.



Beige Black Bronze Ivory White Custom

